

A Member of the Upper Lakes Group



For Immediate Release

MarineLink is proud to announce that it has joined forces with Rohde & Liesenfeld with the signing of an Agency Agreement. MarineLink has appointed Rohde & Liesenfeld Canada Inc. of Calgary, Alberta as its non-exclusive agent to market and sell transportation services related to the MarineLink Explorer as well as the tugs and barges in the MarineLink fleet.

This Agency Agreement relates to services on the St. Lawrence River/Great Lakes System for heavy lift and project cargoes moving to/from Canadian destinations especially for the Alberta Oilsands.

Rohde & Liesenfeld Canada Inc. is a well known and respected Transportation & Logistics specialist in the Alberta and B.C. market and Eastern Canada.

MarineLink is a multifaceted shipping company, specializing in Short Sea Shipping throughout the St. Lawrence Seaway and Great Lakes areas.

Operation Office Telephone:

1-905-934-7917
1-905-934-7448 (Fax)

Corporate Office Telephone:

416-920-7610
416-922-6159 (Fax)

Operation Office:

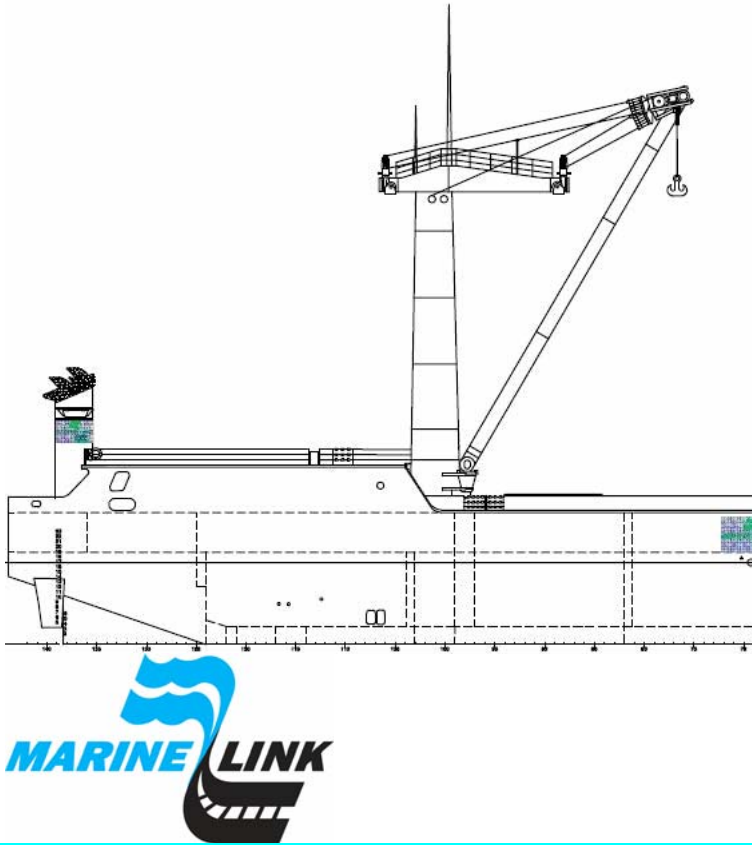
340 Lakeshore Road East,
St. Catharines, ON. L2M 0A2

Corporate office:

49 Jackes Avenue,
Toronto ON. L4T 1E2

Internet:

E-mail: enquiries@MarineLink.info
Website: www.marinelink.info



A Member of the Upper Lakes Group

With a growing fleet of vessels, MarineLink is taking on the challenge of providing “New Generation Shipping”. MarineLink continues its works in developing partnerships, exploring new shipping options and identifying and removing impediments to an effective Short Sea Shipping Industry in the Great Lakes St. Lawrence Seaway corridor.

One of the important new areas of opportunity for short sea shipping involves the port of Thunder Bay on Lake Superior and CN’s completion in 2008 of widening the rail corridor for high and wide equipment moves from Thunder Bay to Ft. McMurray. In addition, one of the rail bridges which was an impediment to over height truck movements from Thunder Bay to the western provinces has been eliminated in 2008. This opens up a project cargo gateway for Quebec and Ontario manufacturers to move oversize and heavy equipment by water to Thunder Bay and then by rail or road from there to western Canada points, like Fort McMurray. MarineLink is in the unique position to be able to serve the water side of reaching Thunder Bay with their Canadian Flag vessel MarineLink Explorer, geared with 2 X 225 metric ton on-board cranes. The vessel can pick-up cargoes anywhere in the St. Lawrence Seaway, on the lakes themselves and the eastern seaboard of Canada and deliver them to Thunder Bay.

For further information please contact:
Bob Armstrong/Graeme Cook-MarineLink-905-934-7917
Jan Beringer- Rohde & Liesenfeld 403-514-6907

-END

Operation Office Telephone:

1-905-934-7917
1-905-934-7448 (Fax)

Corporate Office Telephone:

416-920-7610
416-922-6159 (Fax)

Operation Office:

340 Lakeshore Road East,
St. Catharines, ON. L2M 0A2

Corporate office:

49 Jackes Avenue,
Toronto ON. L4T 1E2

Internet:

E-mail: enquiries@MarineLink.info
Website: www.marinelink.info